



WIRING MANUAL FOR VERTICAL LED LIGHTING



Thank you for your purchase of a Sofia Medicine Cabinet. All products manufactured with pride in the USA.

Please note that your cabinet has been delivered fully assembled, and wired ready for installation. When unpacking the cabinet please take care not to place on tiled, or bare floor (you will chip the corners!). The cabinet includes corner protectors on the doors themselves.

Once your cabinet is installed, please remove these corner protectors.

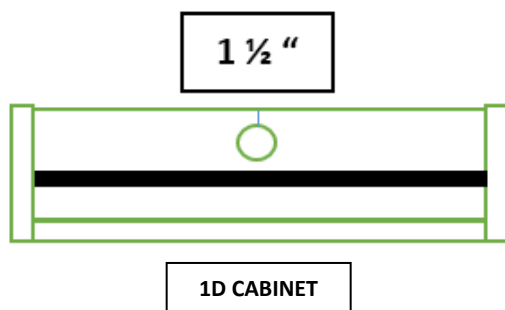
For additional questions/inquiries, please contact our customer support at 718-366-1966 or via email at sofiacabinets@gmail.com. Representatives are available to assist Monday-Friday from 8am-4:30pm.



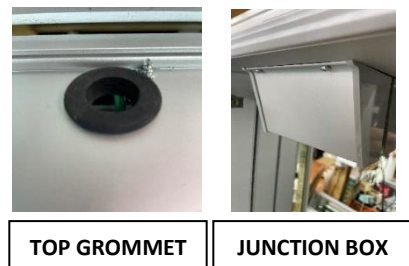
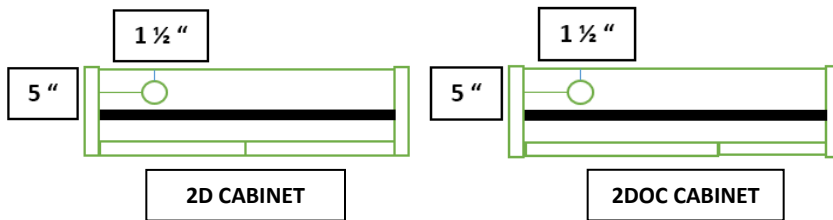
-RECESS/SEMI-RECESS INSTALLATION-

Once you have framed your rough opening as per our product specification sheet, you will need to place the cabinet in the opening and prepare to wire the unit. We recommend all electrical components to be wired by a licensed professional.

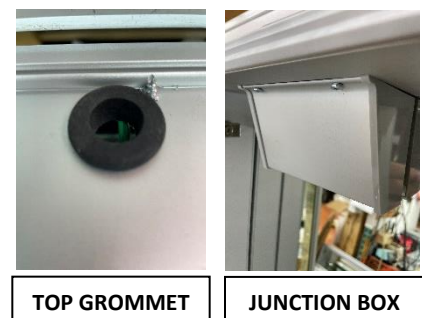
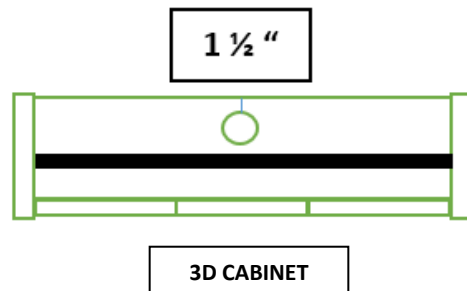
SINGLE DOOR INSTALLATION (RECESS/SEMI-RECESS): Our single door medicine cabinets with vertical LED side lighting are made to order. When you are ready to wire your cabinet, remove the screws holding the junction box (*as shown*) in place. The junction box housing the wires to illuminate your side lighting is located on the inside top of your cabinet, in the center. You will notice a “U shaped” aluminum channel running across the top part of your cabinet (*shaded region as shown*). Underneath, we combine the wires for both side lights. We supply a pre-drilled hole (*with grommet as shown*) on the top of the cabinet, **directly in the center (depending on ordered width)**, and 1 ½” off the back wall. When you are ready to wire your cabinet, remove the screws holding the junction box (*as shown*) in place. Within, you will find a black wire and white wire. These go to a 115v AC source coming from the bathroom switch, (connect black to black and white to white). At the top of the cabinet you will also find a green wire that must be connected to ground. PLEASE NOTE: DO NOT WIRE THIS CABINET TO A DIMMER SWITCH, YOU WILL BURN OUT THE LED LIGHTING.



DOUBLE DOOR INSTALLATION (RECESS/SEMI-RECESS): Our double door (even or off-center split) with vertical LED side lighting are made to order with hinging for the doors on the outer edges of the cabinet. The left door is hinged on the left side, and the right door is hinged on the right side. The junction box to illuminate your medicine cabinet doors is located on the top corner of the interior of the cabinet, within the **LEFT SIDE** of the cabinet, just to the side of the top most hinge. You will notice a “U shaped” aluminum channel running across the top part of your cabinet (*shaded region as shown*). Underneath, we combine the wires for the both side lights. The wiring for **BOTH DOORS** is done on the **LEFT SIDE LOCATED JUNCTION BOX**. We supply a pre-drilled hole (*with grommet as shown*) on the top of the cabinet, 5” off the side, and 1 ½” off the back wall. When you are ready to wire your cabinet, remove the screws holding the junction box (*as shown*) in place. Within, you will find a black wire and white wire. These go to a 115v AC source coming from the bathroom switch, (connect black to black and white to white). At the top of the cabinet you will also find a green wire that must be connected to ground. PLEASE NOTE: DO NOT WIRE THIS CABINET TO A DIMMER SWITCH, YOU WILL BURN OUT THE LED LIGHTING.



TRIPLE DOOR INSTALLATION (RECESS/SEMI-RECESS): Our triple door medicine cabinets with vertical LED side lighting are made to order with standard hinging (when looking at the unit from left to right) – the left side door is hinged on the right side, the middle and right doors are hinged on the left side. The junction box to illuminate your medicine cabinet doors is located behind the **MIDDLE DOOR**. You will notice a “U shaped” aluminum channel running across the top part of your cabinet (*shaded region as shown*). Underneath, we combine the wires for the both side lights. We supply a pre-drilled hole (*with grommet as shown*) on the top of the cabinet, directly in the center (depending on ordered width), and 1 ½” off the back wall. When you are ready to wire your cabinet, remove the screws holding the junction box (*as shown*) in place. Within, you will find a black wire and white wire. These go to a 115v AC source coming from the bathroom switch, (connect black to black and white to white). At the top of the cabinet you will also find a green wire that must be connected to ground. PLEASE NOTE: DO NOT WIRE THIS CABINET TO A DIMMER SWITCH, YOU WILL BURN OUT THE LED LIGHTING.

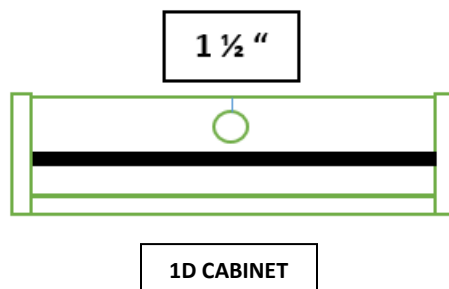




-SURFACE INSTALLATION-

In order to surface mount our products, you must purchase a mirror side kit (full mounting kit) which contains all the necessary hardware to flush mount the unit, as well as the side mirrors to finish it off. Contained within the kit, you will find supplied surface mounting instructions. We recommend all electrical components to be wired by a licensed professional.

SINGLE DOOR INSTALLATION (SURFACE): Our single door medicine cabinets with vertical LED side lighting are made to order. When you are ready to wire your cabinet, remove the screws holding the junction box (*as shown*) in place. The junction box housing the wires to illuminate your side lighting is located on the inside top of your cabinet, in the center. You will notice a “U shaped” aluminum channel running across the top part of your cabinet (*shaded region as shown*). Underneath, we combine the wires for both side lights. We supply a pre-drilled hole (*with elbow connector as shown*) on the top of the cabinet, **directly in the center (depending on ordered width)**, and 1 ½” off the back wall. When you are ready to wire your cabinet, remove the screws holding the junction box (*as shown*) in place. Within, you will find a black wire and white wire. These go to a 115v AC source coming from the bathroom switch, (connect black to black and white to white). At the top of the cabinet you will also find a green wire that must be connected to ground. PLEASE NOTE: DO NOT WIRE THIS CABINET TO A DIMMER SWITCH, YOU WILL BURN OUT THE LED LIGHTING.

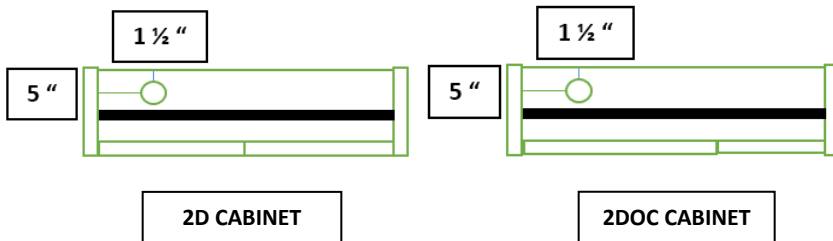


ELBOW CONNECTOR



JUNCTION BOX

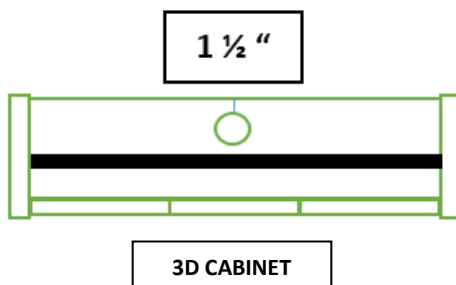
DOUBLE DOOR INSTALLATION (SURFACE): Our double door (even or off-center split) with vertical LED side lighting are made to order with hinging for the doors on the outer edges of the cabinet. The left door is hinged on the left side, and the right door is hinged on the right side. The junction box to illuminate your medicine cabinet doors is located on the top corner of the interior of the cabinet, within the **LEFT SIDE** of the cabinet, just to the side of the top most hinge. You will notice a “U shaped” aluminum channel running across the top part of your cabinet (*shaded region as shown*). Underneath, we combine the wires for the both side lights. The wiring for **BOTH DOORS** is done on the **LEFT SIDE LOCATED JUNCTION BOX**. We supply a pre-drilled hole (*with elbow connector as shown*) on the top of the cabinet, 5” off the side, and 1 ½” off the back wall. When you are ready to wire your cabinet, remove the screws holding the junction box (*as shown*) in place. Within, you will find a black wire and white wire. These go to a 115v AC source coming from the bathroom switch, (connect black to black and white to white). At the top of the cabinet you will also find a green wire that must be connected to ground. PLEASE NOTE: DO NOT WIRE THIS CABINET TO A DIMMER SWITCH, YOU WILL BURN OUT THE LED LIGHTING.



ELBOW CONNECTOR

JUNCTION BOX

TRIPLE DOOR INSTALLATION (SURFACE): Our triple door medicine cabinets with vertical LED side lighting are made to order with standard hinging (when looking at the unit from left to right) – the left side door is hinged on the right side, the middle and right doors are hinged on the left side. The junction box to illuminate your medicine cabinet doors is located behind the **MIDDLE DOOR**. You will notice a “U shaped” aluminum channel running across the top part of your cabinet (*shaded region as shown*). Underneath, we combine the wires for the both side lights. We supply a pre-drilled hole (*with elbow connector as shown*) on the top of the cabinet, **directly in the center (depending on ordered width)**, and 1 ½” off the back wall. When you are ready to wire your cabinet, remove the screws holding the junction box (*as shown*) in place. Within, you will find a black wire and white wire. These go to a 115v AC source coming from the bathroom switch, (connect black to black and white to white). At the top of the cabinet you will also find a green wire that must be connected to ground. PLEASE NOTE: DO NOT WIRE THIS CABINET TO A DIMMER SWITCH, YOU WILL BURN OUT THE LED LIGHTING.



ELBOW CONNECTOR

JUNCTION BOX